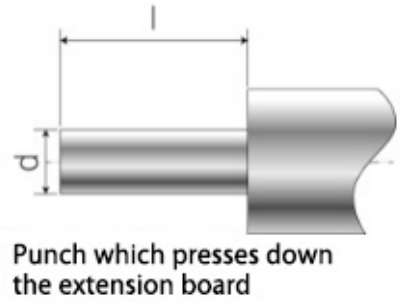
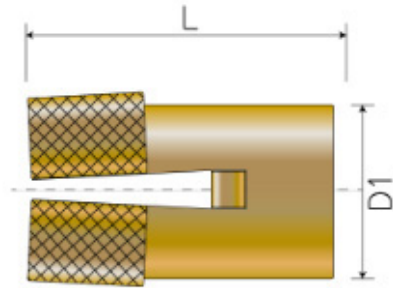


SD-3001	SD-4001	SD-5001	SD-6001		SD-3001	SD-4001	SD-5001	SD-6001
1.5	2.5	3.9	5.4	ABS	686	882	1176	1520
1.7	2.8	4.3	5.9	PPO	784	931	1274	1618
1.7	2.9	4.4	6.1	Polycarbo	804	951	1323	1765

•Dimension Table

SD (Standard Dodge)



Thread M2.6×0.45

D1	L	Effective Thread	Parent material Size A	Parent material Size B	Parent material Size C	Depth of Extension Board dφ	Depth of Extension Board l+0.2	Part No.	Pieces / Box
4.0	5.0	3.5	4.05	5.10	2.0	1.9	4.0	SD-2602	5,000
4.0	6.5	5.0	4.05	6.60	2.0	1.9	5.5	SD-2601	4,000

Thread M3×0.5

D1	L	Effective Thread	Parent material Size A	Parent material Size B	Parent material Size C	Depth of Extension Board dφ	Depth of Extension Board l+0.2	Part No.	Pieces / Box
4.5	5.0	3.5	4.55	5.10	2.2	2.2	4.0	SD-3002	4,000
4.5	6.0	4.0	4.55	6.10	2.2	2.2	5.0	SD-3003	3,000
4.5	6.5	5.0	4.55	6.60	2.2	2.2	5.5	SD-3001	3,000
4.5	7.5	6.0	4.55	7.60	2.2	2.2	6.5	SD-3009	2,500
4.5	8.5	7.0	4.55	8.60	2.2	2.2	7.5	SD-3004	2,000

4.5	10.0	8.0	4.55	10.10	2.2	2.2	9.0	SD-3005	2,000
5.0	6.5	5.0	5.05	6.60	2.5	2.2	5.5	SD-3006	2,000
5.5	6.0	4.0	5.55	6.10	2.7	2.2	5.0	SD-3007	2,000
6.5	11.0	8.0	6.55	11.10	3.2	2.2	10.0	SD-3008	800

Thread M3.5×0.6

D1	L	Effective Thread	Parent material Size A	Parent material Size B	Parent material Size C	Depth of Extension Board dφ	AA	Part No.	Pieces / Box
5.0	8.0	6.3	5.05	8.10	2.5	2.6	6.8	SD-3501	2,000

Thread M4×0.7

D1	L	Effective Thread	Parent material Size A	Parent material Size B	Parent material Size C	Depth of Extension Board dφ	Depth of Extension Board l+0.2	Part No.	Pieces / Box
5.5	6.0	4.2	5.55	6.10	2.7	2.9	4.8	SD-4002	2,000
5.5	7.0	5.2	5.55	7.10	2.7	2.9	5.8	SD-4006	2,000
5.5	9.0	7.2	5.55	9.10	2.7	2.9	7.8	SD-4001	1,500
5.5	11.0	9.0	5.55	11.10	2.7	2.9	9.8	SD-4007	1,000
5.5	14.0	10.0	5.55	14.10	2.7	2.9	12.8	SD-4003	1,000
6.5	9.0	7.2	6.55	9.10	3.2	2.9	7.8	SD-4004	1,000
6.5	14.0	10.0	6.55	14.10	3.2	2.9	12.8	SD-4005	500

Thread M5×0.8

D1	L	Effective Thread	Parent material	Parent material	Parent material	Depth of Extension	Depth of Extension	Part No.	Pieces / Box
----	---	------------------	-----------------	-----------------	-----------------	--------------------	--------------------	----------	--------------

			Size A	Size B	Size C	Board dφ	Board l+0.2		
6.5	7.0	5.1	6.55	7.10	3.2	3.8	5.8	SD-5002	1,500
6.5	9.0	7.1	6.55	9.10	3.2	3.8	7.8	SD-5003	1,000
6.5	11.0	9.1	6.55	11.10	3.2	3.8	9.8	SD-5001	800
6.5	13.0	10.0	6.55	13.10	3.2	3.8	11.8	SD-5004	600

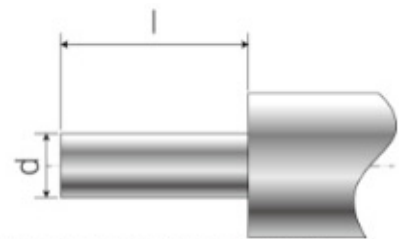
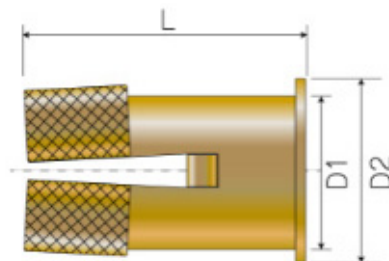
Thread M6×1.0

D1	L	Effective Thread	Parent material Size A	Parent material Size B	Parent material Size C	Depth of Extension Board dφ	Depth of Extension Board l+0.2	Part No.	Pieces / Box
8.0	12.5	10.3	8.05	12.60	4.0	4.5	11.1	SD-6001	500
8.0	15.0	12.0	8.05	15.10	4.0	4.5	13.6	SD-6002	400

Thread M8×1.25

D1	L	Effective Thread	Parent material Size A	Parent material Size B	Parent material Size C	Depth of Extension Board dφ	Depth of Extension Board l+0.2	Part No.	Pieces / Box
11.0	16.0	13.0	11.05	16.10	5.5	6.2	14.6	SD-8001	200

FD(Flange Dodge)



Punch which presses down the extension board

Thread M2.6×0.45

D1	D2	L	Effective Thread	Parent material Size A	Parent material Size B	Parent material Size C	Depth of Extension Board dφ	Depth of Extension	Part No.	Pieces / Box
----	----	---	------------------	------------------------	------------------------	------------------------	-----------------------------	--------------------	----------	--------------

								Board I+0.2		
4.0	5.5	6.0	4.5	4.05	6.10	2.0	1.9	5.0	FD-2601	3,000

Thread M3×0.5

D1	D2	L	Effective Thread	Parent material Size A	Parent material Size B	Parent material Size C	Depth of Extension Board dφ	Depth of Extension Board I+0.2	Part No.	Pieces / Box
5.0	6.5	6.0	4.5	5.05	6.10	2.2	2.2	5.0	FD-3001	2,000
5.0	6.5	7.5	6.0	5.05	7.60	2.2	2.2	6.5	FD-3002	1,500

Thread M4×0.7

D1	D2	L	Effective Thread	Parent material Size A	Parent material Size B	Parent material Size C	Depth of Extension Board dφ	Depth of Extension Board I+0.2	Part No.	Pieces / Box
5.5	8.0	7.5	5.7	5.55	7.60	2.7	2.9	6.3	FD-4001	1,000
5.5	8.0	9.0	7.2	5.55	9.10	2.7	2.9	7.8	FD-4002	1,000

Thread M5×0.8

D1	D2	L	Effective Thread	Parent material Size A	Parent material Size B	Parent material Size C	Depth of Extension Board dφ	Depth of Extension Board I+0.2	Part No.	Pieces / Box
6.5	8.0	9.0	7.1	6.55	9.10	3.2	3.8	7.8	FD-5001	800

Thread M6×1.0

D1	D2	L	Effective Thread	Parent material Size A	Parent material Size B	Parent material Size C	Depth of Extension Board dφ	Depth of Extension Board I+0.2	Part No.	Pieces / Box
8.0	10.0	11.0	8.8	8.05	11.10	4.0	4.5	9.6	FD-6001	500

Thread M8×1.25

D1	D2	L	Effective Thread	Parent material Size A	Parent material Size B	Parent material Size C	Depth of Extension Board dφ	Depth of Extension Board l+0.2	Part No.	Pieces / Box
11.0	14.0	16.0	12.0	11.05	16.10	5.5	6.2	14.6	FD-8001	600