

LCD SCREEN CAMERA

Model DP200

DP200 is the 2-in-1 imaging device consisting of a 2 mega pixels CMOS camera and a full HD LCD ideal for on-screen observation. Connect to any microscope having a C (or CS) mount. Even if C (or CS) mount is not available, it can be also mounted on the eyepiece tube of microscopes with an optional DP200-A adapter. Another option S-EYE software enables image saving and measurement on Windows PC.



- 2M pixels CMOS sensor (1920x1080)
- 11.6" IPS Color LCD Full HD (1920 x1080)
- 30 fps frame rate for smooth video image
- Easy to use with a wireless mouse



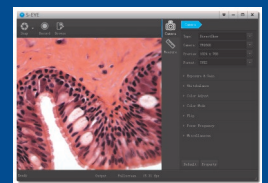
DP200 + DSZV-44CPG microscope



OPTIONAL ACCESSORIES



DP200-A
Eyepiece Adapter



S-EYE
Software

Camera	CMOS, 2M pixels (1920 x 1080), 2.97mm x 5.28mm size, 30 fps
Monitor	11.6 inch IPS Color LCD, Full HD (1920 x 1080), Tilttable up to 90°
Mount type	C mount (with 5mm ring) and CS mount
SDHC card slot	1 (SDHC card is not included.)
USB Port	2 (1 for mouse, 1 for connection with PC)
Functions	Parameter Adjustment / View Control / Image Saving in SDHC card / Grid Control / Capture and measurement on PC (option)
Accessories	Wireless Mouse / AC Adapter
Options	DP200-A Eyepiece Adapter S-EYE Image Process & Measurement Software (for Win 7, 8 and 10)